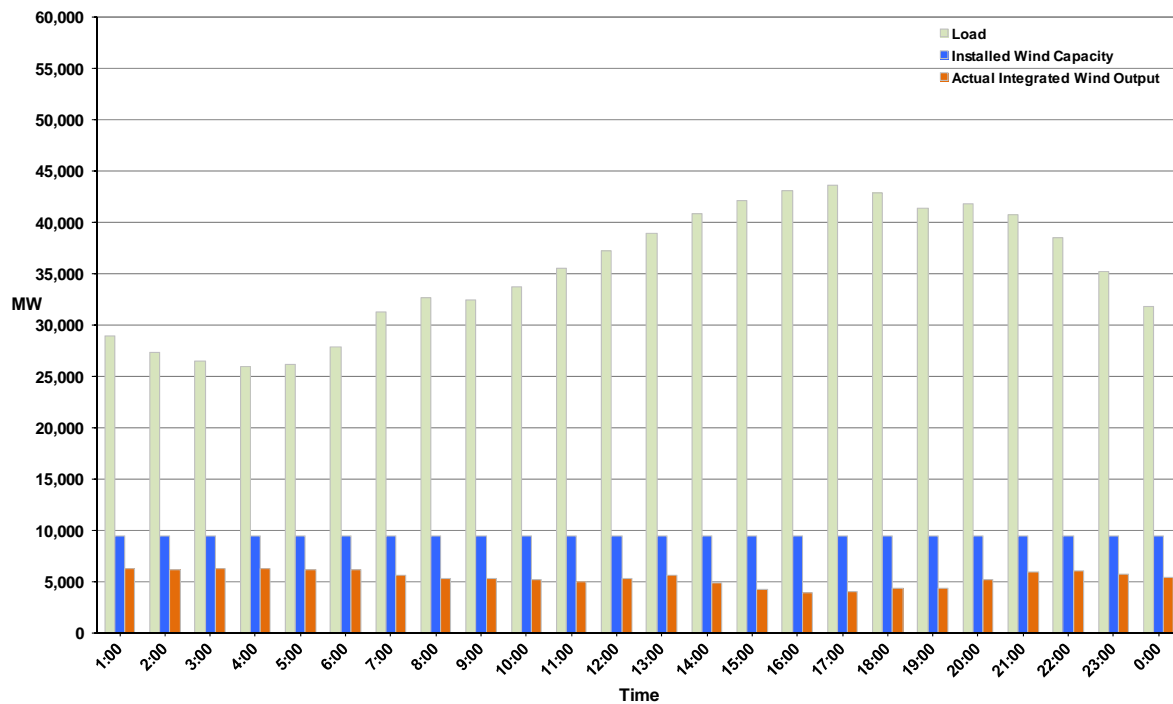




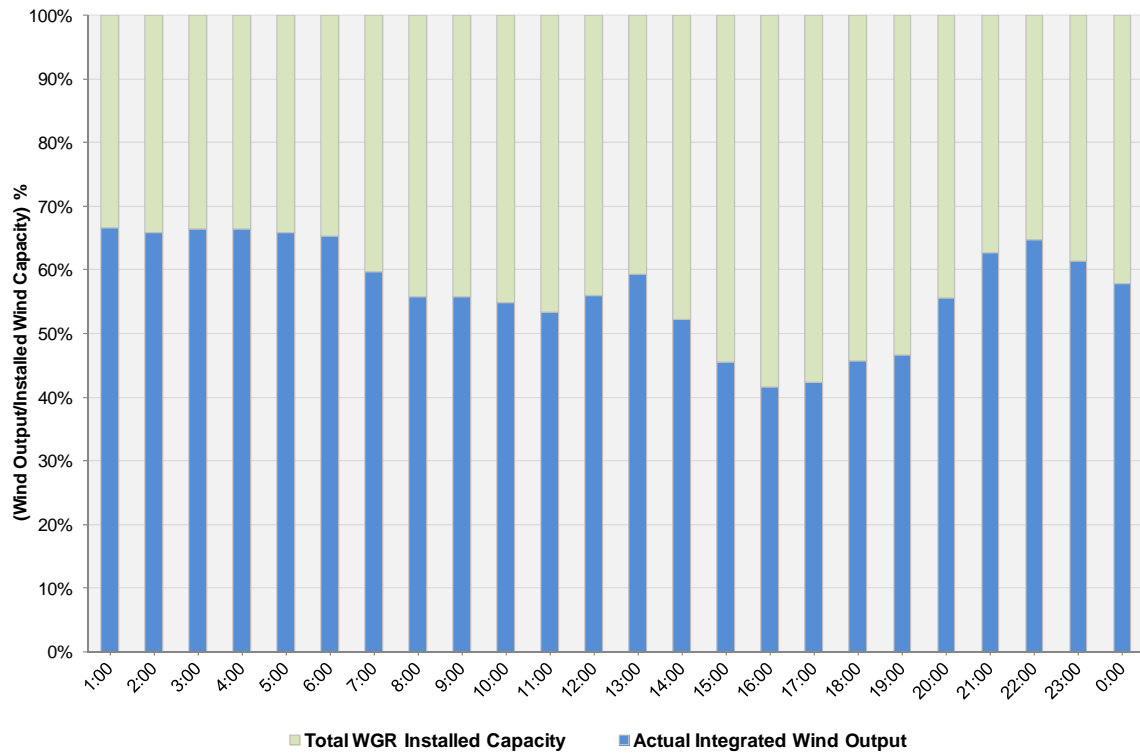
ERCOT Grid Operations Wind Integration Report: 10/25/11

Peak Load	43,604 MW
Load Peak Hour	17
Wind over Peak	3,992 MW
Wind Record 10/07/11	7,400 MW
Max Wind Value	6,396 MW
Wind Peak Time	00:46
Wind Integration %	22.53%

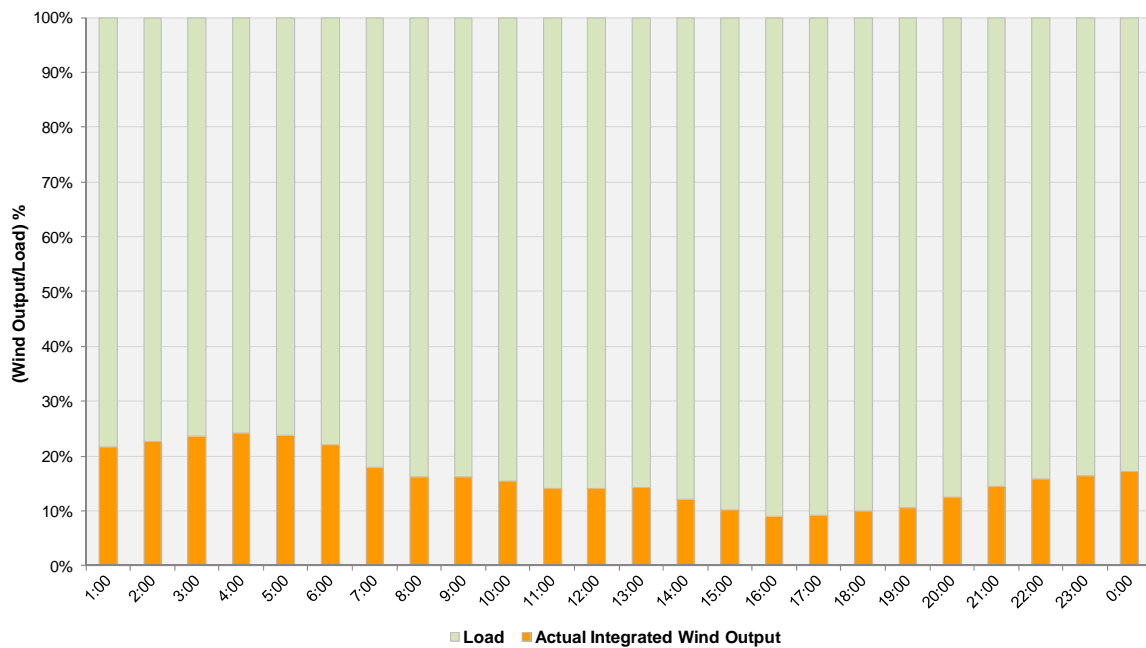
**Hourly Average Actual Load vs. Actual Wind Output
10-25-2011**



Actual Wind Output as a Percentage of the Total Installed Wind Capacity
10-25-2011



Actual Wind Output as a Percentage of the ERCOT Load
10-25-2011



ERCOT Load vs. Actual Wind Output 10/18/2011 - 10/25/2011

